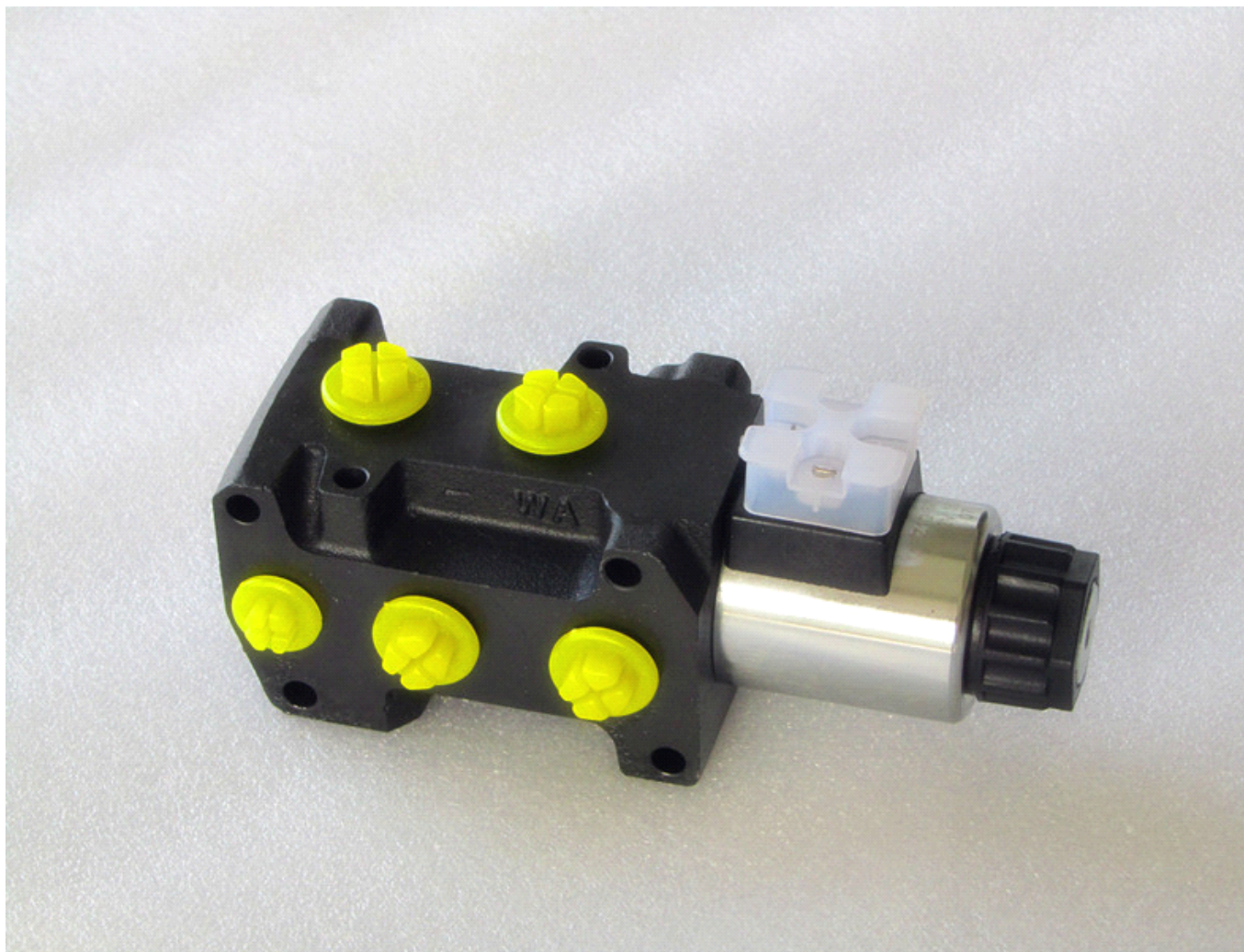


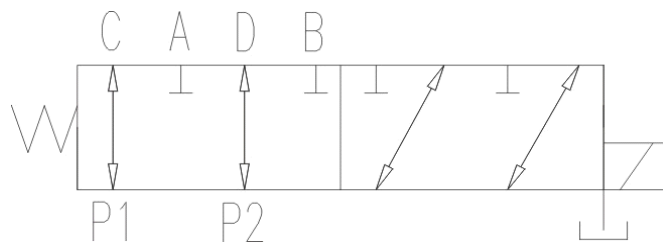


6/2 SELECTOR VALVE

The Bauer SV62 stackable selector valve is operated by a continuously rated wet pin solenoid. The valve is capable of switching from one circuit to another at a variety of flows and pressures. The valve may be connected to the service ports of a directional control valve and used to direct service line flow to and from either of two separate consumers. If more than two circuits are to be controlled then additional units can be stacked together, minimizing the need for pipes and fittings. Alternatively, the valve can be connected to a pump and used to direct the flow to either one of two different circuits.



Spool symbol



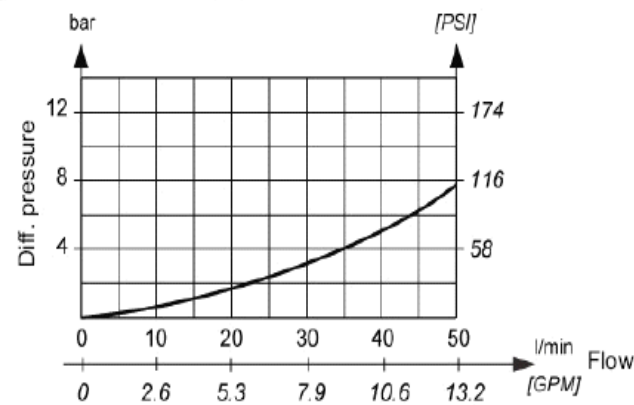
Ordering codes

valve type	spool type	specification	voltage
1	2	3	4

item	collocation	explanation
1	SV	Selector valve
2	62	6way/2station
3	38/12	G3/8"; G1/2"
4	voltage	DC12; 24V
5	Unit	Omit for 1 unit, N*(*=2~5)

Δp-Q Performance curve

Measured at 40°C [104°F] and viscosity of 32 mm²/s [148 SUS].



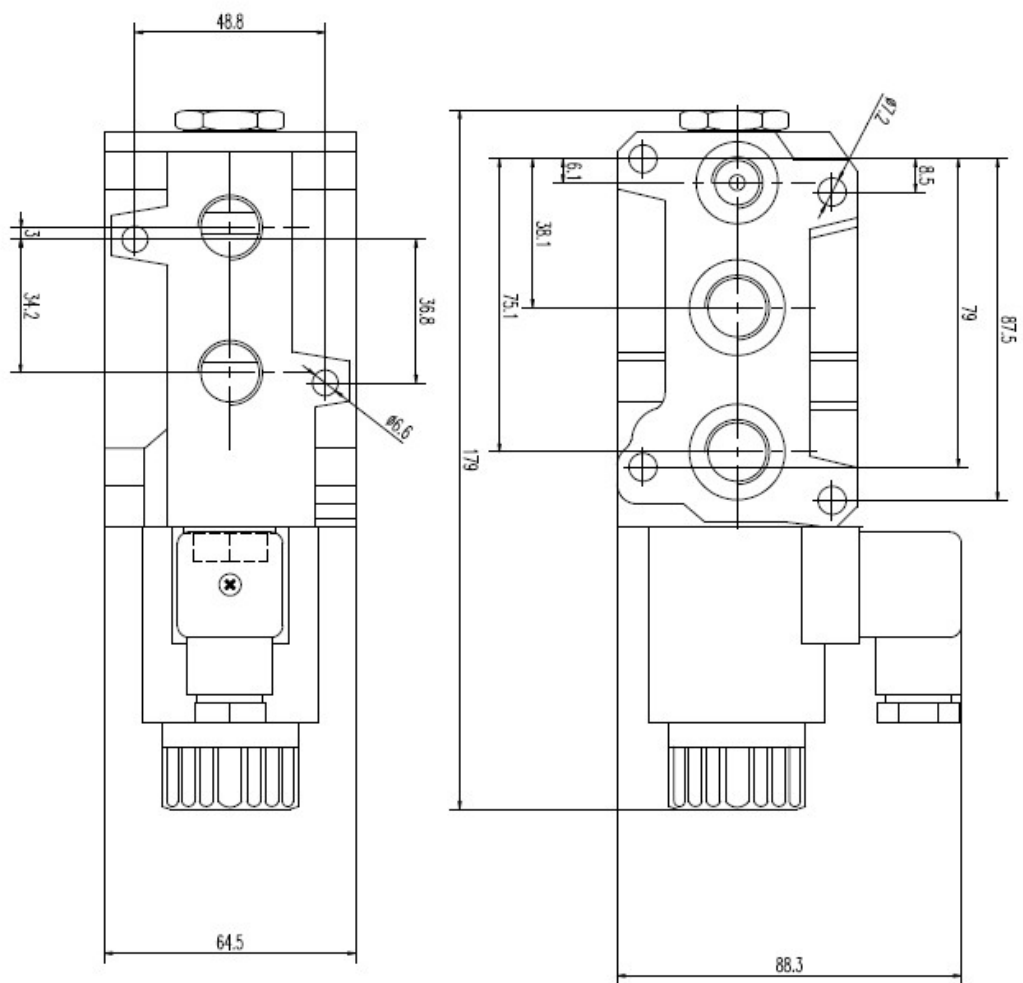
Features

Hydraulic

Size	NG6	
Flow rate	L/min	50
Operating pressure	bar	250
Oil temperature range	° C	-20 to +70
Viscosity range	mm ² /s	15 to 380
Mass	Kg	3.7
Filtration	NAS 1638	8

Electrical

Supply voltage	V	12, 24 DC
Switching frequency	1/hour	15 000 times
Ambient temperature	° C	to +50
Coil temperature	° C	to +180
Duty cycle	Continuous	



Unit:mm