

**ATEX Compliant**

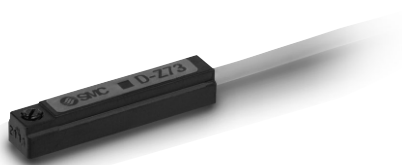
## ATEX Compliant Reed Switch/Direct Mounting

# D-Z73/D-Z80-588



CE Ex II 3G Ex nA II T5 X -10 °C ≤ Ta ≤ +60 °C  
II 3D Ex tD A22 IP67 T93 °C X

### Grommet



Note) All other specifications (dimensions, drawings, etc.) are the same as the non ATEX type.

## Specifications

PLC: Programmable Logic Controller

D-Z73 (With indicator light)		
Auto switch model number	D-Z73	
Applicable load	Relay/PLC	
Load voltage	24 V DC	
Max. load current and range	5 to 40 mA	
Internal Circuit *	③	
Contact protection circuit	None	
Internal voltage drop	2.4 V or less (up to 20 mA)/3 V or less (up to 40 mA)	
Indicator light	Red LED illuminates when turned ON	
D-Z80 (Without indicator light)		
Auto switch model number	D-Z80	
Applicable load	Relay/PLC/IC circuit	
Load voltage	24 V <sup>AC</sup> <sub>DC</sub> or less	48 V <sup>AC</sup> <sub>DC</sub>
Max. load current	50 mA	40 mA
Internal Circuit *	④	
Contact protection circuit	None	
Internal resistance	1 Ω or less (Including 3 m lead wire)	

\* For internal circuit, refer to the Internal Circuit No. on page 96.

• This category 3 type auto switch can only be used in zones 2 and 22.

## Oilproof Heavy-duty Lead Wire Specifications

Auto switch type		D-Z73/D-Z80
Sheath	Outside diameter [mm]	Ø 2.7
	Number of cores	2 cores (Brown, Blue)
Insulator	Outside diameter [mm]	Ø 1.1
	Cross section [mm <sup>2</sup> ]	0.18
Conductor	Strand diameter [mm]	Ø 0.08
	Minimum bending radius of lead wire [mm] (Reference)	17

## How to order

D-Z       -588

• Suffix for ATEX certified category 3

### Auto switch model number

73	With indicator light
80	Without indicator light

### Lead wire length

-	0.5 m
L	3 m
Z	5 m (Except D-Z80)