

W36000 Series Thread-to-Connect



Eaton's W36000 Series is a screw-to-connect quick disconnect coupling. Due to its design and the materials used, the W36000 Series quick disconnect coupling has excellent resistance to mechanical and hydraulic applications where vibration is present. The inner components of sizes 3/4", 1" & 1 1/4" have a robust construction to withstand the harsh application needs. Additionally the plug sleeve ensures protection of the sealing area upon disconnection.

Product Features

- Designed and manufactured in accordance with Article 3.3 of the European Pressure Equipment Directive (PED) 97/23 EC
- Proprietary profile
- Thread-to-connect with double shut-off valving
- Can be connected against 50 bar (725 psi) residual pressure
- Optional dust caps and plugs (PVC or aluminium)
- An alternative version can be offered with a safety feature which minimizes the risk of unscrewing in conditions of heavy vibration
- O-ring indication allows checking that connection is complete (thus guaranteeing full flow)
- Standard body material: Zinc trivalent plated steel
- Standard seal material: NBR

Physical Characteristics

| Body Size (in) | Nominal Flow Diameter (mm) | Max. Operating Pressure | | Max. Residual Pressure during Connection | | Rated Flow* | |
|-------------------|-------------------------------|-------------------------|-------------------|--|-------|-------------|-------|
| | | bar | (psi) | bar | (psi) | L/min | (gpm) |
| 3/4 | 5.3 | 450 | 6525 | 50 | 725 | 12 | 3.17 |
| 3/8 | 7.3 | 450 | 6525 | 50 | 725 | 21 | 5.55 |
| 1/2 | 10.2 | 400** 250*** | 5800** 3625*** | 50 | 725 | 43 | 11.36 |
| 3/4 | 13.0 | 400 | 5800 | 50 | 725 | 77 | 20.34 |
| 1 | 16.9 | 300 | 4350 | 50 | 725 | 120 | 31.70 |
| 1 1/4 | 22.4 | 300 | 4350 | 50 | 725 | 300 | 79.25 |

* Indicated values refer to a 1 bar / 14.5 psi pressure drop.

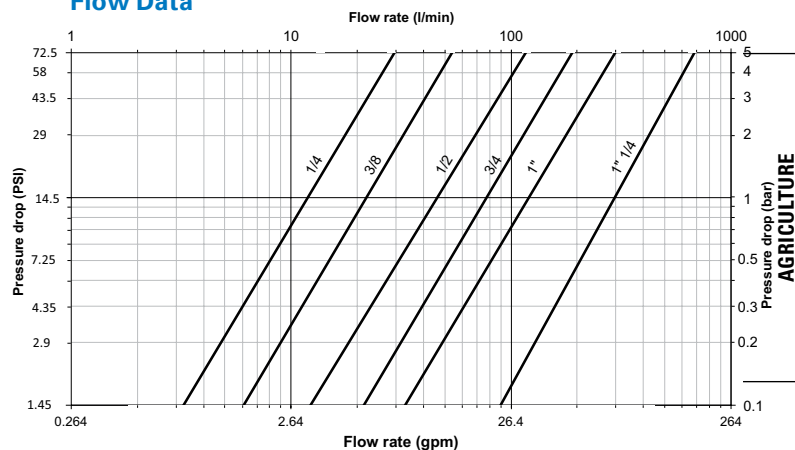
** Operating pressures apply to BSPP and NPT threads.

*** For ISO 8434-1 end connections.

Applications & Markets

- Construction
- Agriculture
- Forestry machinery
- Snow-grooming machines

Flow Data



Seal Elastomer Data*

| Seal Elastomer | Max. Operation Temperature Range |
|----------------|----------------------------------|
| NBR (Nitrile) | -20°C +100°C/-4°F +212°F |

* For reference only, based on Eaton recommended temperatures.

Contact Eaton technical support for further information on fluid compatibility.

FLUID TRANSFER
AND HYDRAULIC

PNEUMATIC

SPECIAL APPLICATIONS

DIAGNOSTIC

AGRICULTURE

REFRIGERANT

W36000 Series Thread-to-Connect

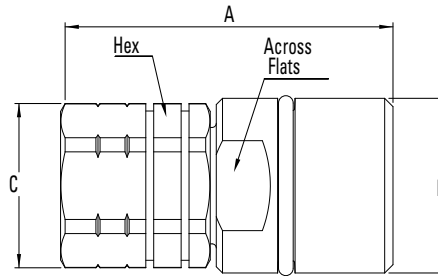


Figure 1

Sockets (Female) with Internal Thread

| Part Number* | Body Size | Nominal Flow Diameter | Thread Size* (Female) | | Fig. | Dimensions | | | | | | Weight | | | | | |
|--------------|-----------|-----------------------|-----------------------|-------|------|------------|--------|--------|-------------------|----------|--------|--------|--------|-------------------|----------|------|-------|
| | | | NPT | BSP | | A (in) | B (in) | C (in) | Across Flats (in) | Hex (in) | A (mm) | B (mm) | C (mm) | Across Flats (mm) | Hex (mm) | lbs | grams |
| WA3601700 | ¼ | 5.3 | - | ¼-19 | 1 | 2.28 | 0.94 | 0.94 | 0.87 | 0.87 | 58 | M24x2 | 24 | 22 | 22 | 0.26 | 117 |
| WA3621725 | ¼ | 5.3 | ¼-18 | - | 1 | 2.28 | 0.94 | 0.94 | 0.87 | 0.87 | 58 | M24x2 | 24 | 22 | 22 | 0.30 | 138 |
| WA3602725BS | ¾ | 7.3 | - | ¼-19 | 1 | 2.40 | 1.10 | 0.94 | 0.94 | 0.87 | 61 | M28x2 | 24 | 24 | 22 | 0.36 | 163 |
| WA3622725 | ¾ | 7.3 | ¼-18 | - | 1 | 2.40 | 1.10 | 0.94 | 0.94 | 0.87 | 61 | M28x2 | 24 | 24 | 22 | 0.36 | 165 |
| WA3602700 | ¾ | 7.3 | - | ¾-19 | 1 | 2.40 | 1.10 | 0.94 | 0.94 | 0.87 | 61 | M28x2 | 24 | 24 | 22 | 0.34 | 156 |
| WA3622737 | ¾ | 7.3 | ¾-18 | - | 1 | 2.40 | 1.10 | 0.94 | 0.94 | 0.87 | 61 | M28x2 | 24 | 24 | 22 | 0.35 | 158 |
| WA3603737BS | ½ | 10.2 | - | ¾-19 | 1 | 2.84 | 1.42 | 1.18 | 1.61(Hex) | 1.06 | 72 | M36x2 | 30 | 41(Hex) | 27 | 0.82 | 370 |
| WA3623737 | ½ | 10.2 | ¾-18 | - | 1 | 2.84 | 1.42 | 1.18 | 1.61(Hex) | 1.06 | 72 | M36x2 | 30 | 41(Hex) | 27 | 0.82 | 372 |
| WA3603700 | ½ | 10.2 | - | ½-14 | 1 | 2.95 | 1.42 | 1.18 | 1.61(Hex) | 1.06 | 75 | M36x2 | 30 | 41(Hex) | 27 | 0.79 | 360 |
| WA3623750 | ½ | 10.2 | ½-14 | - | 1 | 2.95 | 1.42 | 1.18 | 1.61(Hex) | 1.06 | 75 | M36x2 | 30 | 41(Hex) | 27 | 0.80 | 361 |
| WA3604750BS | ¾ | 13 | - | ½-14 | 1 | 3.15 | 1.65 | 1.57 | 1.42 | 1.42 | 80 | M42x2 | 40 | 36 | 36 | 1.06 | 480 |
| WA3624750 | ¾ | 13 | ½-14 | - | 1 | 3.15 | 1.65 | 1.57 | 1.42 | 1.42 | 80 | M42x2 | 40 | 36 | 36 | 1.07 | 484 |
| WA3604700 | ¾ | 13 | - | ¾-14 | 1 | 3.15 | 1.65 | 1.57 | 1.42 | 1.42 | 80 | M42x2 | 40 | 36 | 36 | 1.03 | 466 |
| WA3624775 | ¾ | 13 | ¾-14 | - | 1 | 3.15 | 1.65 | 1.57 | 1.42 | 1.42 | 80 | M42x2 | 40 | 36 | 36 | 1.04 | 472 |
| WA3605775BS | 1 | 16.9 | - | ¾-14 | 1 | 3.78 | 1.89 | 1.81 | 1.65 | 1.65 | 96 | M48x3 | 46 | 42 | 42 | 1.62 | 735 |
| WA3625775 | 1 | 16.9 | ¾-14 | - | 1 | 3.78 | 1.89 | 1.81 | 1.65 | 1.65 | 96 | M48x3 | 46 | 42 | 42 | 1.63 | 741 |
| WA3605700 | 1 | 16.9 | - | 1-11 | 1 | 3.78 | 1.89 | 1.81 | 1.65 | 1.65 | 96 | M48x3 | 46 | 42 | 42 | 1.51 | 684 |
| WA36257100 | 1 | 16.9 | 1-11½ | - | 1 | 3.78 | 1.89 | 1.81 | 1.65 | 1.65 | 96 | M48x3 | 46 | 42 | 42 | 1.53 | 694 |
| WA3606700 | 1¼ | 22.4 | - | 1¼-11 | 1 | 4.96 | 2.76 | 2.83 | 2.56 | 2.56 | 126 | M70x3 | 72 | 65 | 65 | 4.82 | 2185 |
| WA36267125 | 1¼ | 22.4 | 1¼-11½ | - | 1 | 4.96 | 2.76 | 2.83 | 2.56 | 2.56 | 126 | M70x3 | 72 | 65 | 65 | 4.87 | 2207 |
| WA36067150BS | 1¼ | 22.4 | - | 1½-11 | 1 | 4.96 | 2.76 | 2.83 | 2.56 | 2.56 | 126 | M70x3 | 72 | 65 | 65 | 4.63 | 2101 |
| WA36267150 | 1¼ | 22.4 | 1½-11½ | - | 1 | 4.96 | 2.76 | 2.83 | 2.56 | 2.56 | 126 | M70x3 | 72 | 65 | 65 | 4.68 | 2121 |

* Alternative end connections upon request.

To obtain connected length of coupling add dimensions A (Fig. 1) and K (Fig. 3) or O (Fig. 4) together.

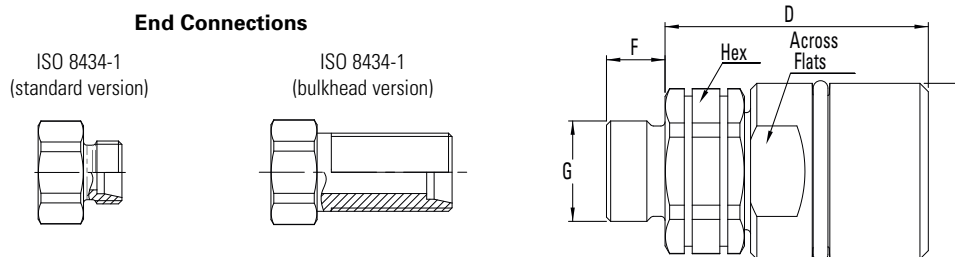


Figure 2

Sockets (Female) with External Thread

| Part Number | Body Size | Nominal Flow Diameter | Thread Size* (Male) | | Fig. | Dimensions | | | | | | Weight | | | | | | |
|--------------|-----------|-----------------------|------------------------|--------|------|------------|--------|--------|-------------------|----------|--------|--------|--------|---------|-------------------|----------|------|-------|
| | | | ISO 8434-1** | D (in) | | E (in) | F (in) | G (in) | Across Flats (in) | Hex (in) | D (mm) | E (mm) | F (mm) | G (mm) | Across Flats (mm) | Hex (mm) | lbs | grams |
| WA3633708L | ½ | 10.2 | M14x1.5 - 8L | 2 | 2.32 | 1.42 | 0.39 | 0.55 | 1.61(Hex) | 1.06 | 59 | M36x2 | 10 | M14x1.5 | 41(Hex) | 27 | 0.73 | 330 |
| WA3633710L | | | M16x1.5 - 10L | 2 | 2.28 | 1.42 | 0.43 | 0.63 | 1.61(Hex) | 1.06 | 58 | M36x2 | 11 | M16x1.5 | 41(Hex) | 27 | 0.72 | 328 |
| WA3633712L | | | M18x1.5 - 12L | 2 | 2.28 | 1.42 | 0.43 | 0.71 | 1.61(Hex) | 1.06 | 58 | M36x2 | 11 | M18x1.5 | 41(Hex) | 27 | 0.73 | 330 |
| WA3633715L | | | M22x1.5 - 15L | 2 | 2.24 | 1.42 | 0.47 | 0.87 | 1.61(Hex) | 1.06 | 57 | M36x2 | 12 | M22x1.5 | 41(Hex) | 27 | 0.77 | 350 |
| WA3633715LBH | | | M22x1.5 - 15L Bulkhead | 2 | 2.28 | 1.42 | 1.50 | 0.87 | 1.61(Hex) | 1.06 | 58 | M36x2 | 38 | M22x1.5 | 41(Hex) | 27 | 0.85 | 385 |

* Alternative end connections upon request.

** Light L series = working pressure 250 bar/3625 psi max.

To obtain connected length of coupling add dimensions D (Fig. 2) and K (Fig. 3) or O (Fig. 4) together.

W36000 Series Thread-to-Connect

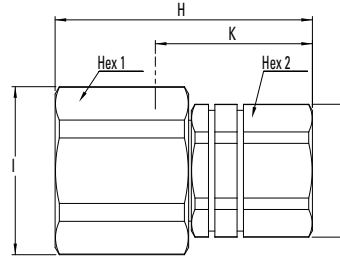


Figure 3

Plugs (Male) with Internal Thread

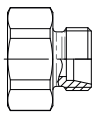
| Part Number | Body Size | Nominal Flow Diameter | Thread Size* (Female) | | Fig. | Dimensions | | | | | | | | | | Weight | | | |
|--------------|-----------|-----------------------|-----------------------|-------|------|------------|--------|--------|--------|------------|------------|--------|--------|--------|--------|------------|------------|------|-------|
| | | | NPT | BSPP | | H (in) | I (in) | J (in) | K (in) | Hex 1 (in) | Hex 2 (in) | H (mm) | I (mm) | J (mm) | K (mm) | Hex 1 (mm) | Hex 2 (mm) | lbs | grams |
| WA3601400 | ¼ | 5.3 | - | ¼-19 | 3 | 2.17 | 1.26 | 0.94 | 1.22 | 1.14 | 0.87 | 55 | 32 | 24 | 31 | 29 | 22 | 0.41 | 184 |
| WA3621425 | ¼ | 5.3 | ¼-18 | - | 3 | 2.17 | 1.26 | 0.94 | 1.22 | 1.14 | 0.87 | 55 | 32 | 24 | 31 | 29 | 22 | 0.33 | 150 |
| WA3602425BS | ¾ | 7.3 | - | ¼-19 | 3 | 2.28 | 1.38 | 0.94 | 1.26 | 1.26 | 0.87 | 58 | 35 | 24 | 32 | 32 | 22 | 0.36 | 164 |
| WA3622425 | ¾ | 7.3 | ¼-18 | - | 3 | 2.28 | 1.38 | 0.94 | 1.26 | 1.26 | 0.87 | 58 | 35 | 24 | 32 | 32 | 22 | 0.37 | 166 |
| WA3602400 | ¾ | 7.3 | - | ¾-19 | 3 | 2.28 | 1.38 | 0.94 | 1.26 | 1.26 | 0.87 | 58 | 35 | 24 | 32 | 32 | 22 | 0.35 | 158 |
| WA3622437 | ¾ | 7.3 | ¾-18 | - | 3 | 2.28 | 1.38 | 0.94 | 1.26 | 1.26 | 0.87 | 58 | 35 | 24 | 32 | 32 | 22 | 0.35 | 160 |
| WA3603437BS | ½ | 10.2 | - | ¾-19 | 3 | 2.52 | 1.77 | 1.18 | 1.46 | 1.61 | 1.06 | 64 | 45 | 30 | 37 | 41 | 27 | 0.61 | 276 |
| WA3623437 | ½ | 10.2 | ¾-18 | - | 3 | 2.52 | 1.77 | 1.18 | 1.46 | 1.61 | 1.06 | 64 | 45 | 30 | 37 | 41 | 27 | 0.61 | 278 |
| WA3603400 | ½ | 10.2 | - | ½-14 | 3 | 2.60 | 1.77 | 1.18 | 1.57 | 1.61 | 1.06 | 66 | 45 | 30 | 40 | 41 | 27 | 0.60 | 271 |
| WA3623450 | ½ | 10.2 | ½-14 | - | 3 | 2.60 | 1.77 | 1.18 | 1.57 | 1.61 | 1.06 | 66 | 45 | 30 | 40 | 41 | 27 | 0.60 | 273 |
| WA3604450BS | ¾ | 13.0 | - | ½-14 | 3 | 3.03 | 1.97 | 1.57 | 1.85 | 1.81 | 1.42 | 77 | 50 | 40 | 47 | 46 | 36 | 1.01 | 456 |
| WA3624450 | ¾ | 13.0 | ½-14 | - | 3 | 3.03 | 1.97 | 1.57 | 1.85 | 1.81 | 1.42 | 77 | 50 | 40 | 47 | 46 | 36 | 1.01 | 460 |
| WA3604400 | ¾ | 13.0 | - | ¾-14 | 3 | 3.03 | 1.97 | 1.57 | 1.85 | 1.81 | 1.42 | 77 | 50 | 40 | 47 | 46 | 36 | 0.97 | 442 |
| WA3624475 | ¾ | 13.0 | ¾-14 | - | 3 | 3.03 | 1.97 | 1.57 | 1.85 | 1.81 | 1.42 | 77 | 50 | 40 | 47 | 46 | 36 | 0.99 | 448 |
| WA3605475BS | 1 | 16.9 | - | ¾-14 | 3 | 3.62 | 2.36 | 1.81 | 2.24 | 2.17 | 1.65 | 92 | 60 | 46 | 57 | 55 | 42 | 1.77 | 805 |
| WA3625475 | 1 | 16.9 | ¾-14 | - | 3 | 3.62 | 2.36 | 1.81 | 2.24 | 2.17 | 1.65 | 92 | 60 | 46 | 57 | 55 | 42 | 1.79 | 811 |
| WA3605400 | 1 | 16.9 | - | 1-11 | 3 | 3.62 | 2.36 | 1.81 | 2.24 | 2.17 | 1.65 | 92 | 60 | 46 | 57 | 55 | 42 | 1.66 | 751 |
| WA36254100 | 1 | 16.9 | 1-11½ | - | 3 | 3.62 | 2.36 | 1.81 | 2.24 | 2.17 | 1.65 | 92 | 60 | 46 | 57 | 55 | 42 | 1.68 | 761 |
| WA3606400 | 1¼ | 22.4 | - | 1¼-11 | 3 | 4.72 | 3.50 | 2.83 | 2.76 | 3.03 | 2.56 | 120 | 89 | 72 | 70 | 77 | 65 | 5.56 | 2520 |
| WA36264125 | 1¼ | 22.4 | 1¼-11½ | - | 3 | 4.72 | 3.50 | 2.83 | 2.76 | 3.03 | 2.56 | 120 | 89 | 72 | 70 | 77 | 65 | 5.60 | 2542 |
| WA36064150BS | 1¼ | 22.4 | - | 1½-11 | 3 | 4.72 | 3.50 | 2.83 | 2.76 | 3.03 | 2.56 | 120 | 89 | 72 | 70 | 77 | 65 | 5.37 | 2436 |
| WA36264150 | 1¼ | 22.4 | 1½-11½ | - | 3 | 4.72 | 3.50 | 2.83 | 2.76 | 3.03 | 2.56 | 120 | 89 | 72 | 70 | 77 | 65 | 5.41 | 2456 |

* Alternative end connections upon request.

To obtain connected length of coupling add dimensions K (Fig. 3) and A (Fig. 1) or D (Fig. 2) together.

End Connections

ISO 8434-1
(standard version)



ISO 8434-1
(bulkhead version)

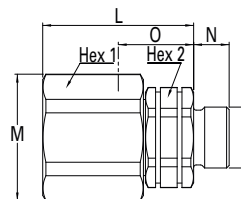
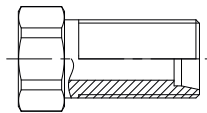


Figure 4

Plugs (Male) with External Thread

| Part Number | Body Size | Nominal Flow Diameter | Thread Size* (Male) | | Fig. | Dimensions | | | | | | | | | | Weight | | | | |
|--------------|-----------|-----------------------|------------------------|--------|------|------------|--------|--------|--------|------------|------------|--------|--------|--------|--------|---------|------------|------------|------|-------|
| | | | ISO 8434-1** | L (in) | | M (in) | N (in) | O (in) | P (in) | Hex 1 (in) | Hex 2 (in) | L (mm) | M (mm) | N (mm) | O (mm) | P (mm) | Hex 1 (mm) | Hex 2 (mm) | lbs | grams |
| WA3633408L | ½ | 10.2 | M14x1.5 - 8L | 4 | 1.93 | 1.77 | 0.39 | 1.42 | 0.55 | 1.61 | 1.06 | 49 | 45 | 10 | 36 | M14x1.5 | 41 | 27 | 0.56 | 255 |
| WA3633410L | | | M16x1.5 - 10L | 4 | 1.93 | 1.77 | 0.43 | 1.42 | 0.63 | 1.61 | 1.06 | 49 | 45 | 11 | 36 | M16x1.5 | 41 | 27 | 0.56 | 253 |
| WA3633412L | | | M18x1.5 - 12L | 4 | 1.93 | 1.77 | 0.43 | 1.42 | 0.71 | 1.61 | 1.06 | 49 | 45 | 11 | 36 | M18x1.5 | 41 | 27 | 0.56 | 255 |
| WA3633415L | | | M22x1.5 - 15L | 4 | 1.93 | 1.77 | 0.47 | 1.42 | 0.87 | 1.61 | 1.06 | 49 | 45 | 12 | 36 | M22x1.5 | 41 | 27 | 0.61 | 275 |
| WA3633415LBH | | | M22x1.5 - 15L Bulkhead | 4 | 1.93 | 1.77 | 1.50 | 1.42 | 0.87 | 1.61 | 1.06 | 49 | 45 | 38 | 36 | M22x1.5 | 41 | 27 | 0.68 | 310 |

* Alternative end connections upon request.

** Light L series = working pressure 250 bar/3625 psi max.

To obtain connected length of coupling add dimensions O (Fig. 4) and A (Fig. 1) or D (Fig. 2) together.

FLUID TRANSFER
AND HYDRAULIC

PNEUMATIC

SPECIAL APPLICATIONS

DIAGNOSTIC

AGRICULTURE

REFRIGERANT

W36000 Series Thread-to-Connect

Dust Plugs and Dust Caps

| Body Size (in) | Socket Dust Plug Part Number | | Plug Dust Cap Part Number | |
|-------------------|------------------------------|-----------|---------------------------|-----------|
| | Anodized Aluminium | PVC | Anodized Aluminium | PVC |
| ¼ | WD3611700 | WP3611700 | WD3611400 | WP3611400 |
| ⅜ | WD3612700 | WP3612700 | WD3612400 | WP3612400 |
| ½ | WD3613700 | WP3613700 | WD3613400 | WP3613400 |
| ¾ | WD3614700 | WP3614700 | WD3614400 | WP3614400 |
| 1 | WD3615700 | WP3615700 | WD3615400 | WP3615400 |
| 1¼ | WD3616700 | WP3616700 | WD3616400 | WP3616400 |

For installation instructions, please contact your Eaton sales representative



Metal Socket Dust Plug



Metal Plug Dust Cap



PVC Socket Dust Plug



PVC Plug Dust Cap

Seal Kit for Servicing Sockets (Female)

| Body Size (in) | Seal & Back-up Ring Kit* | NBR seals & PTFE back-up rings |
|-------------------|--------------------------|--------------------------------|
| | Part Number | |
| ¼ | WG3601700 | 10 seals + 10 back-up rings |
| ⅜ | WG3602700 | 10 seals + 10 back-up rings |
| ½ | WG3603700 | 10 seals + 10 back-up rings |
| ¾ | WG3604700 | 5 seals + 5 back-up rings |
| 1 | WG3605700 | 5 seals + 5 back-up rings |
| 1½ | WG3606700 | 1 seal + 1 back-up ring |

* The valve seal is not included in our repair kits

FLUID TRANSFER
AND HYDRAULIC

PNEUMATIC

SPECIAL APPLICATIONS

DIAGNOSTIC

AGRICULTURE

REFRIGERANT