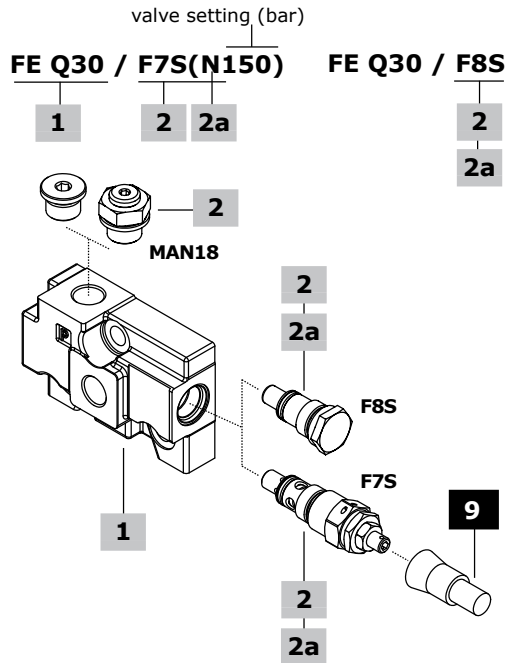


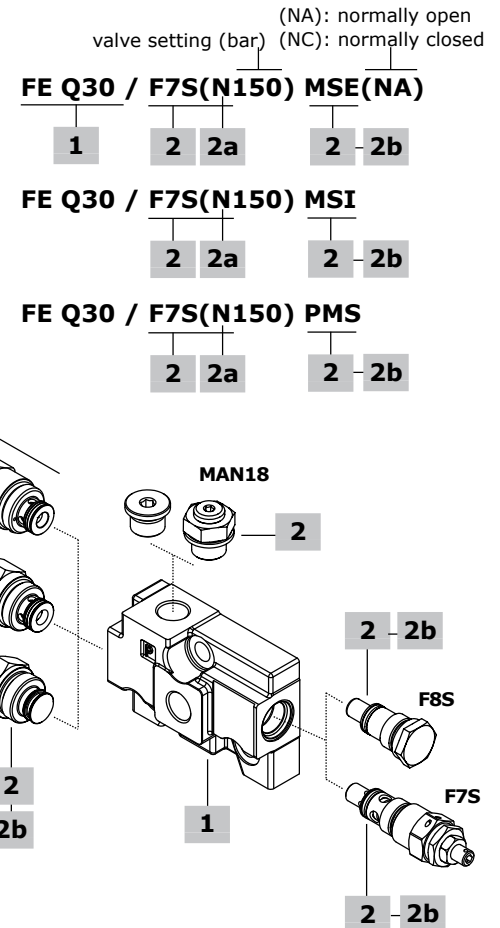
Inlet section - part ordering codes

Standard section

With relief valve:



With relief and unloader valves:



1 Inlet body section* page 85

TYPE	CODE	DESCRIPTION
FE-Q30	060012741599	Side inlet port, upper inlet plugged, pressure relief valve arrangement
TYPE	CODE	DESCRIPTION
FE-Q30	060012979299	As previous one, with unloader valve arrangement

2 Configuration coding* page 86

TYPE	DESCRIPTION
F7S	With pressure relief valve
F8S	Without valves (pressure relief valve plugged port)
F7S-MSE	With pressure relief valve and electric unloader valve
F7S-MSI	With pressure relief valve and hydraulic unloader valve
F7S-PMS	With pressure relief valve and PMS valve blanking plug
F8S-MSE	With electric unloader valve and pressure relief valve blanking plug
F8S-MSI	With hydraulic unloader valve and pressure relief valve blanking plug
F8S-PMS	Without valves (plugged ports)

Note: Inlet configurations require upper P port: for Q30 n. 1 G3/8 plug code 060002792199, or n. 1 pressure gauge arrangement code 5MAN621200;

2a Main pressure relief valve page 87

TYPE: B	CODE:	DESCRIPTION:
B	700035205000000	VLP35S valve, setting range 10-100 bar (145-1450 psi)
TYPE: N	CODE:	DESCRIPTION:
N	700035105000000	VLP35S valve, setting range 101-200 bar (1460-2900 psi)
TYPE: R	CODE:	DESCRIPTION:
R	700035305000000	VLP35S valve, setting range 201-380 bar (2910-5500 psi)
TYPE: -	CODE:	DESCRIPTION:
-	060002788899	Relief valve blanking plug

2b Unloader inlet valve page 88

TYPE	CODE	DESCRIPTION
MSE(NA)	0EF08002003	Electric unloader valve, normally open, screw type emergency. It requires MSE assembly joint
MSE(NC)	0EF08002006	Electric unloader valve, normally closed, screw type emergency. It requires MSE assembly joint
-	060002997299	Assembling joint for MSE valves
MSI	03839MSI	Hydraulic unloader valve
PMS	060002978899	Valve blanking plug

3 Coil

TYPE	CODE	DESCRIPTION
For MSE valves		
BER	4SLE001200A	12 VDC ISO4400 coil
	4SLE002400A	24 VDC ISO4400 coil

Note: For **BER** type coils, see page 243

9 Accessory

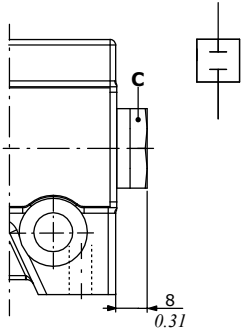
TYPE	CODE	DESCRIPTION
-	4COP120420	Antitamper cap for pressure relief valve

(*): Codes are referred to **BSP** thread

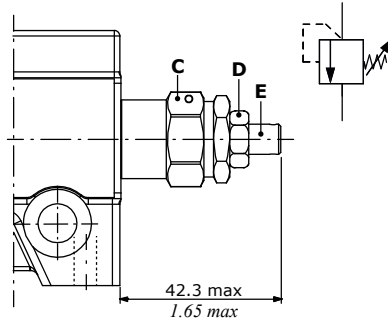
Standard inlet section

Main pressure relief valve

Relief valve blanking plug



Main pressure relief valve

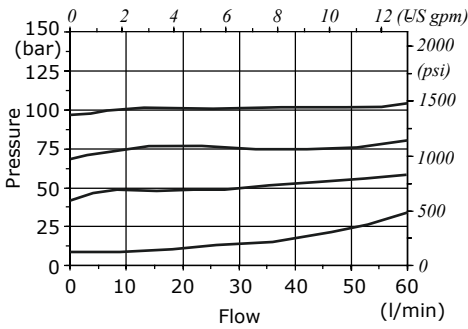


Wrenches and tightening torques

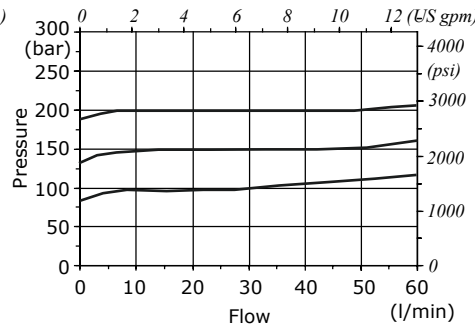
- C = wrench 22 - 42 Nm (31 lbft)
- D = wrench 13 - 24 Nm (17.7 lbft)
- E = allen wrench 4

Spring type	Setting ranges (bar - psi)
B (white)	From 10 to 100 - from 145 to 1450
N (black)	From 101 to 200 - from 1460 to 2900
R (red)	From 201 to 380 - from 2910 to 5500

Setting example (B type spring)



Setting example (N type spring)



Setting example (R type spring)

